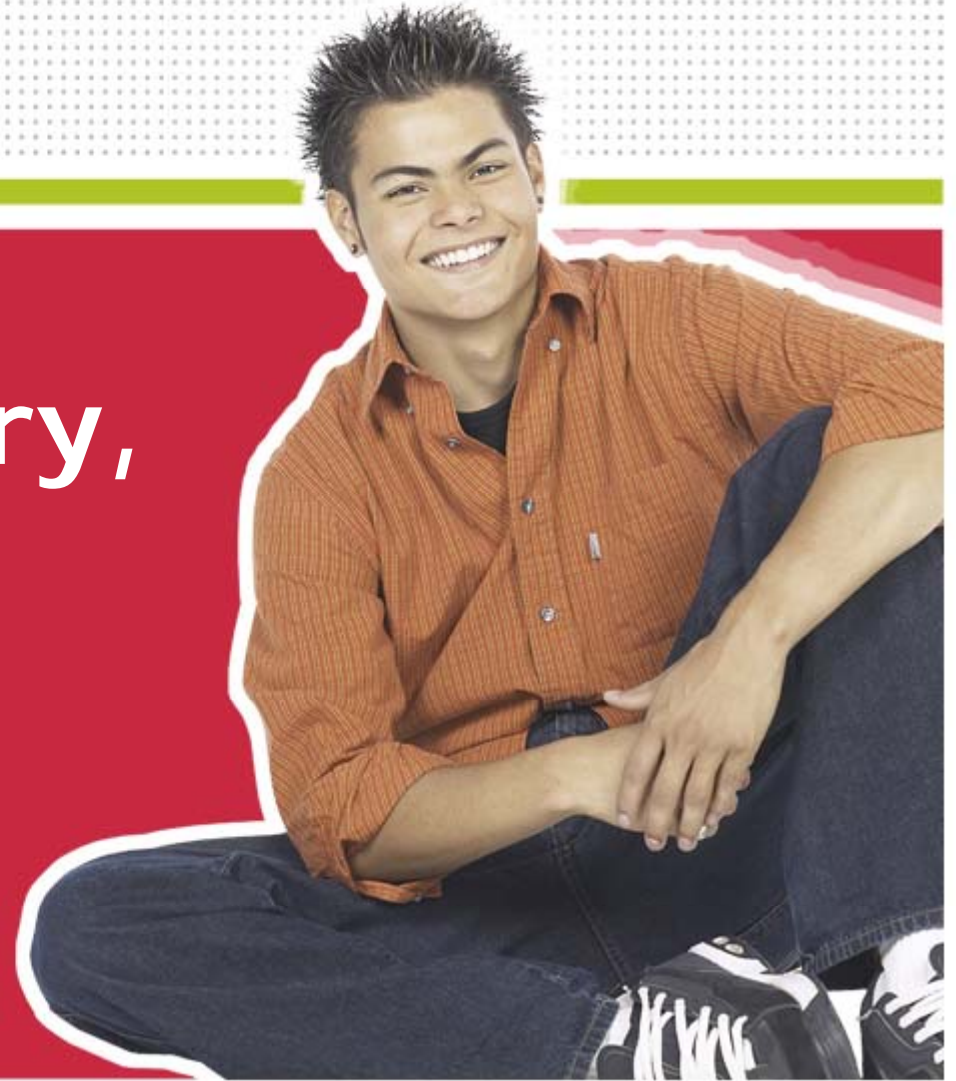


ncwise

Mark Scale, Credit Recovery, and Training Opportunities

NC WISE Training Team

NCDPI



PUBLIC SCHOOLS OF NORTH CAROLINA

Department of Public Instruction | State Board of Education :: Technology Services :: NC WISE Support and Deployment

Document Use

This document is the property of the NC DPI and may not be copied in whole or in part without the express written permission of the NC DPI.

This curriculum is intended for LEAs to use and/or customize for re-delivery based on specific LEA needs. If modifications and additions are made to this curriculum, LEAs are responsible for the content.

Overview

- Mark Scale changes
- Credit Recovery process
- Training Opportunities
- Questions

Mark Scale

Mark Scale changes

- Now 4 scales categorized into 2 groups
 - Standard – Option 1 and Option 2
 - Augmented – Option 1 and Option 2
- High Schools must use one of the 4 scales
- Elementary and Middle schools allowed to use grading systems approved by local board of education.

Mark Scale – Standard Scale

- Option 1 – Letter Grades with + and –
 - A=4.0 B=3.0 C=2.0 D=1.0
 - F=0.0 WF, FF, WP, INC, AUD, P = 0.0

- Option 2 – Numeric Grades **NEW**
 - 93-100=4.0 85-92=3.0 77-84=2.0 70-76=1.0
 - ≤69=0.0 WF, FF, WP, INC, AUD, P = 0.0

Mark Scale – Augmented Scale

- Option 1 – Letter Grades with + and –
 - $A+ = 4.000$ $A = 4.000$ $A- = 3.67$ $B+ = 3.333$
 $B = 3.000$ $B- = 2.667$ $C+ = 2.333$ $C = 2.000$
 $C- = 1.667$ $D+ = 1.333$ $D = 1.000$ $D- = 0.667$
 $F = 0.0$ $WF, FF, WP, INC, AUD, P = 0.0$

Mark Scale – Augmented Scale

- Option 2 – Numeric Grades
 - 96-100=4.0
 - 95=3.875
 - 94=3.750
 - 93=3.625
 - 92=3.500
 - 91=3.375

Credit Recovery

Credit Recovery Process

- Credit recovery is defined as earning credit for a course initially failed,
 - either through partial modular remediation or
 - taking the full course over again.
- Both the failed course grade **and** the recovered grade should appear on transcript and
- Both grades will be included in GPA and class rank calculations.

Credit Detail screen example

Credit Detail

348 High School Homeroom No Homeroom

Pupil Number Legal Last Name Suffix Legal First Name Gender Birth Date Grade Middle Name

Adam Jess M 12 L

Diploma CP (6) 2004/05 Diploma

Credits

Course Code	Course Desc.	Sec.	Final Mark	Compl. Date	Drop Date	Earned Cr.	Potential Cr.	Crs. Gr. Lvl	D
40212ER	US History	04	F	06/11/2009		0.000	1.000	GR 11	
40212ER	US History	01	C	07/23/2009		1.000	1.000	GR 11	SS
?						?			
?						?			
?						?			
?						?			

Credit Recovery Process

- A student retakes the EOC **only** in cases where the student failed the EOC when taking the initial course.
- The student **does not have to retake** the EOC (if it was passed initially), even if they retake the course.

Training Opportunities

Questions

Training & Support Contacts

- NC WISE Training Team Mailbox:
ncwisetraining@dpi.state.nc.us
- NC WISE Service Desk Mailbox:
help@dpi.state.nc.us
- Service Desk phone number:
919.807.4357

ncwise

ncwise

www.ncwise.org