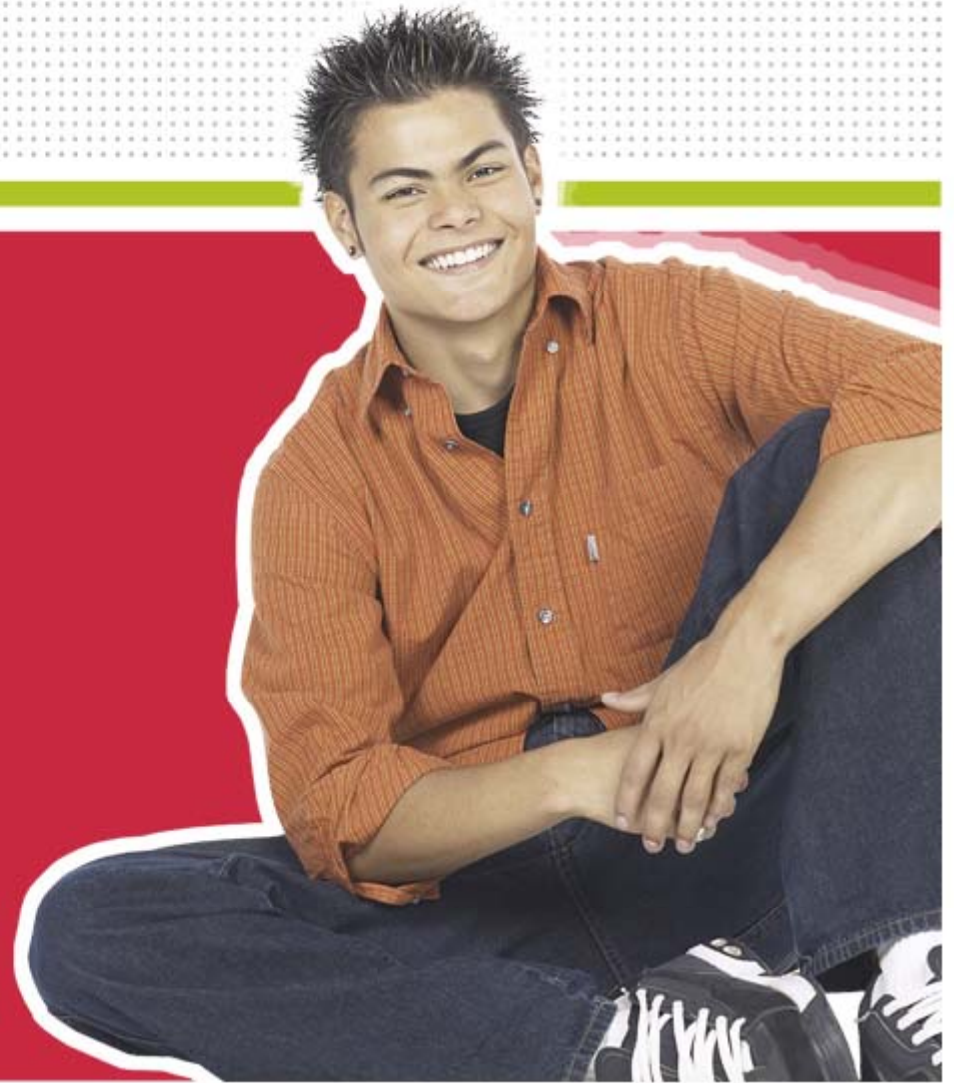


ncwise

Ethnicity Updates

NC WISE Software & Data
Management Team
NCDPI



PUBLIC SCHOOLS OF NORTH CAROLINA

Department of Public Instruction | State Board of Education :: Technology Services :: NC WISE Support and Deployment

Document Use

This document is the property of the NC DPI and may not be copied in whole or in part without the express written permission of the NC DPI.

This curriculum is intended for LEAs to use and/or customize for re-delivery based on specific LEA needs. If modifications and additions are made to this curriculum, LEAs are responsible for the content.

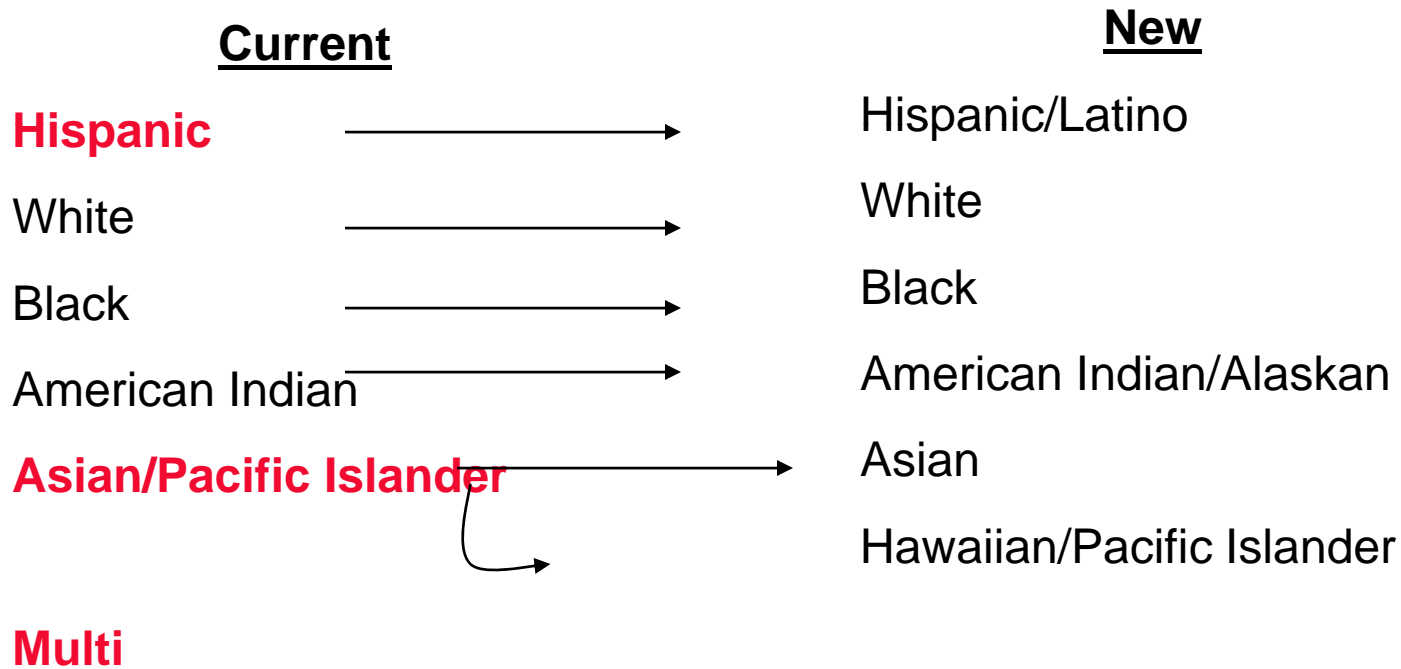
Overview

- Some students will be required to re-identify their race/ethnicity choices to comply with new Federal requirements.
- NC WISE/eSIS will incorporate new functionality to accommodate these changes during the 2009-2010 school year.
- This re-identification is a large task for the LEAs and schools, and NC WISE plans to assist wherever possible.
- More information is forthcoming. August Webinars will present more details.

New Ethnicity process Overview

- NEW – 2 part choice
- Student chooses ethnicity
 - either **HISPANIC** or non-HISPANIC
- Student chooses race (**1 or more**)
 - American Indian or Alaska Native
 - Asian
 - Black or African American
 - Native Hawaiian or Other Pacific Islander
 - White

Current ethnicity re-identification



RED- must re-identify

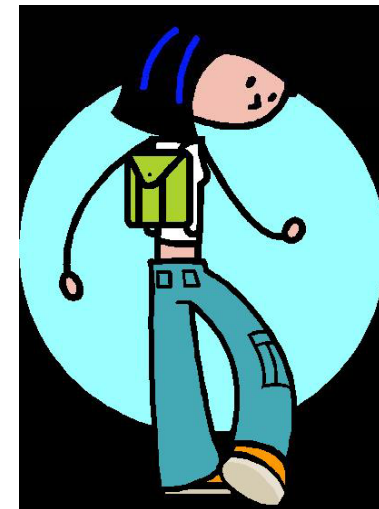
Primary re-identification component tasks

LEA/school Tasks

- Determine which students are TARGETED to re-identify.
- Ensure that the students TARGETED to re-identify DO re-identify.
- Record in NC WISE new race/ethnicity choices for the students who are TARGETED to re-identify
- Record in NC WISE new ethnicity choices for any OTHER students who wish to re-identify based on new Federal guidelines.

NC WISE support

1. NC WISE update, before 2010, will add new ethnicity functionality
2. Prior to eSIS upgrade, NC WISE will provide worksheets, based on NC WISE Reporting Hub reports .
3. Worksheets permit schools to collect re-identification data
4. And deliver the new ethnicity choices to DPI to be uploaded into the system after the upgrade



Worksheet Details

- Two Worksheets choices includes data for either. . .
 - All current students
 - Or all students who are targeted to re-identify
- For each student worksheet includes:
 - Current ethnicity choice
 - Indication whether student is targeted to re-identify
 - Columns to identify new choices



Worksheet Process

- Schools
 - Choose Worksheet
 - *Re-identify all students who are targeted/or choose to re-identify*
 - *Record all re-identification choices in the worksheet*
 - Deliver worksheet to LEA coordinator



Worksheet Process

- LEAs
 - Verify school worksheets
 - Adjust worksheets to include only students who have re-identified
 - *Combine all school worksheets into a single worksheet*
 - Deliver worksheet to DPI



Worksheet Process

- DPI
 - NC WISE upgrades eSIS to include new ethnicity functionality
 - *Validates LEA worksheets*
 - Returns errors to LEA coordinators
- DPI uploads new choices into NC WISE



Questions

ncwise

ncwise

www.ncwise.org