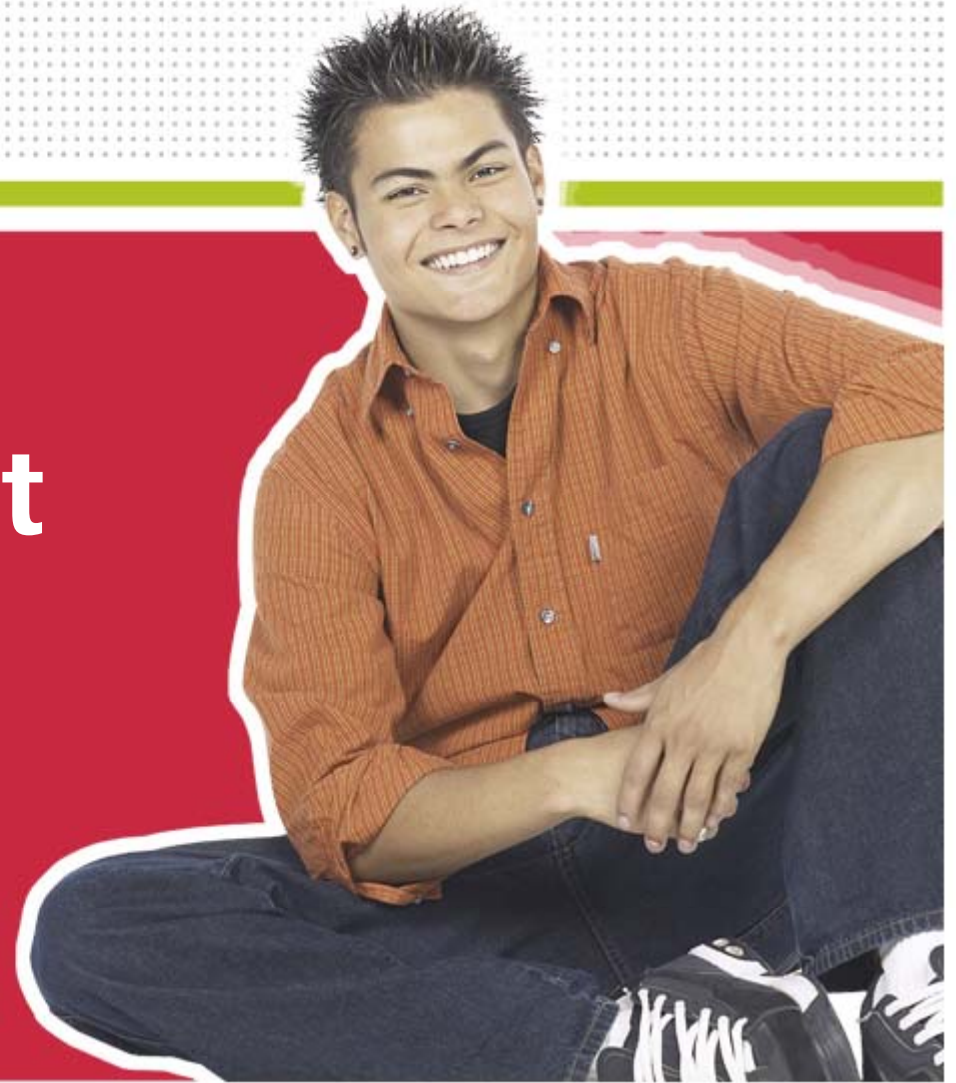


ncwise

NC Transcript

LaDansa Ussery
NC WISE Functional System
Analyst



PUBLIC SCHOOLS OF NORTH CAROLINA

Department of Public Instruction | State Board of Education :: Technology Services :: NC WISE Support and Deployment


Please be aware that there still maybe a few more changes to the transcript in the future.




Why the changes to the Transcript?



Fields to be Omitted:

- Attendance records
 - Immunization records
 - Previous schools
 - Course of study
 - SAT, PSAT and ACT
 - Grade 10 Writing
- 
- A decorative footer consisting of several horizontal lines in blue and green colors.


Fields to be Omitted:

- Student disabilities
 - Course Code Index
 - Student ID
 - Course Code
 - Special Programs alternate assessment
 - Special Education references
- 
- A decorative footer consisting of several horizontal lines in blue, green, and yellow colors.


What should be on the Transcript?




The following:

- Standard school heading
 - Student Information
 - School Information
 - Long Title of course
 - Grade
- 
- A decorative footer consisting of several horizontal lines in blue, green, and red colors.

Cont'

- Quality Points (Weighted and Unweighted)
 - Earned Credits
 - Flags
 - UNC Requirements
 - Performance Information (GPA)
- 
- A decorative footer consisting of several horizontal lines in blue, green, and red colors.

Cont'

- End of Grade Test
 - Earn Credit for MS taking HS courses
 - Award/Achievement
 - Curriculum-Related
 - Testing
- 
- A decorative footer at the bottom of the slide consists of several horizontal lines in blue, green, and red.

Cont'

- Course flags
- Grade scale



**Example of the revised NC
Standardized Transcript was sent
out with the Virtual Academy
Information**



Our suggestion....

- Attendance
- Immunization records
- Previous Schools attended
- Student's course of study at the school level



Parent and Student's:

- Student report card
- Report generated by NC WISE with the appropriate permission

Training & Support Contacts

- NC WISE Service Desk:
help@dpi.state.nc.us
- Service Desk phone number:
919.807.4357

ncwise

ncwise

www.ncwise.org