

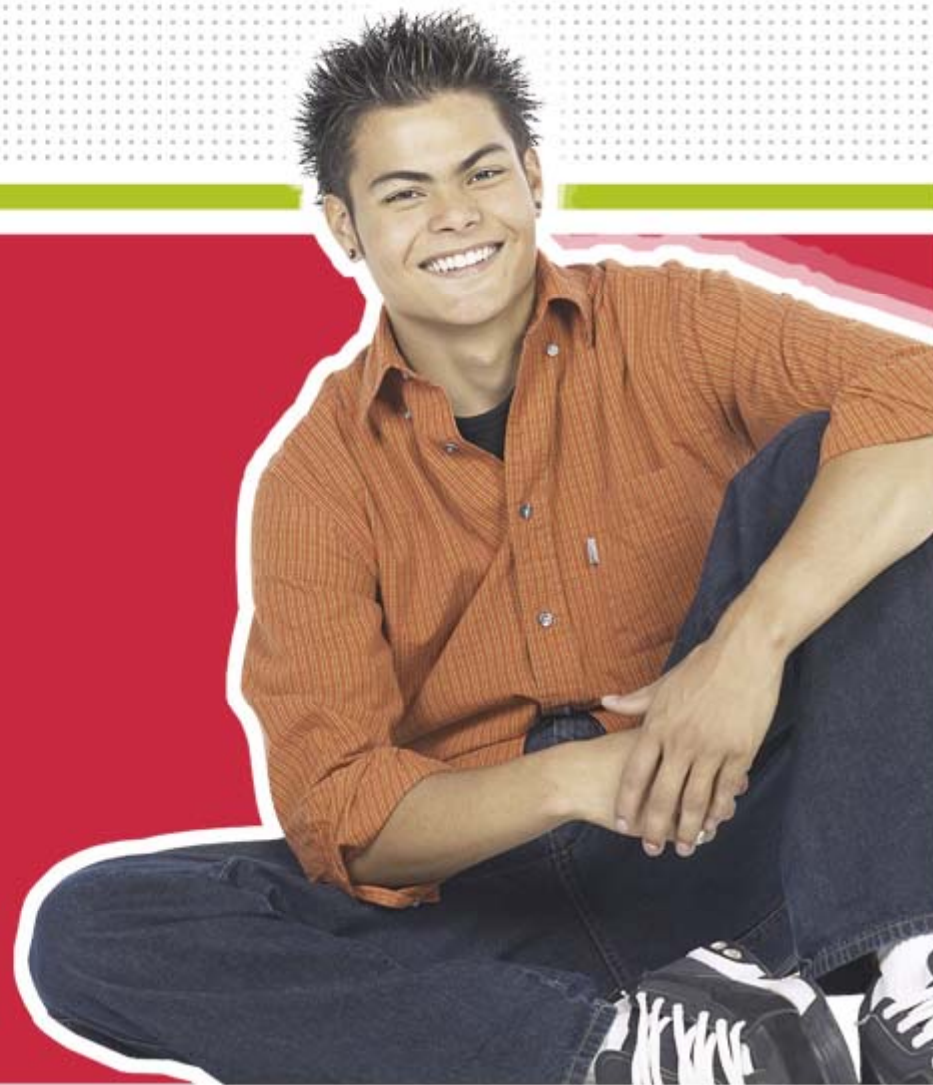
ncwise

Summer Academy 2009

Sandra Johnson, NC DPI Service Desk

Everly Broadway, Ed.D.
Section Chief for K-12 Mathematics &
NC MSP State Coordinator
Curriculum,

Rhonda Welfare
Senior Analyst, State and Federal Reporting
Career and Technical Education



PUBLIC SCHOOLS OF NORTH CAROLINA

Department of Public Instruction | State Board of Education :: Technology Services :: NC WISE Support and Deployment

Document Use

Property of the NC DPI

May not be copied in whole or in part without written permission of NC DPI.

Intended for LEA use

May be customized for specific LEA needs.
LEA responsible for altered content.

Overview

- **Future Ready Core**
- **Course Utility**

Future Ready Core 2009 / 2010

The Core (21 units)

4 credits of English

4 credits of Mathematics

3 credits of Social Studies

The Core. Cont'd (21 units)

3 credits of Science

**1 credit of Health/Physical
Education**

6 Elective Credits (required)

- **2 credits from CTE, Arts, or Second Language**
- **4 credit Concentration (recommended)**

Core Mathematics Courses

Algebra I		Integrated Math I
+	O	
Geometry	R	Integrated Math II
+		
Algebra II		Integrated Math III

~Plus one more course aligned with a student's post high school plans~

ncwise Math Substitutions

Must be authorized by the principal

Core Mathematics Courses

Algebra I & Geometry	OR	Algebra I & Algebra II	OR	Integrated Mathematics I & Integrated Mathematics II
----------------------------	----	------------------------------	----	--

+ 2 Application Based Mathematics Courses

Math Substitutions

Must be authorized by the principal

Guidelines for substitution

http://community.learnnc.org/dpi/math/archives/2008/12/guidelines_for.php

Career Technical Education

Career Technical Education

- 4 course concentration
- Arts
- Second Languages
- Career and Technical Education
- Ad-hoc

Career Clusters

<http://www.ncpublicschools.org/docs/cte/publications/career/clusters.pdf>

URL FRC documentation

[http://www.ncpublicschools.org/
docs/parents/resources/
makingthegrade/2008fall.pdf](http://www.ncpublicschools.org/docs/parents/resources/makingthegrade/2008fall.pdf)

[http://www.ncpublicschools.org/
docs/curriculum/home/
graduationrequirements.pdf](http://www.ncpublicschools.org/docs/curriculum/home/graduationrequirements.pdf)

[http://www.ncpublicschools.org/
docs/gradrequirements/
resources/math/requirements.pdf](http://www.ncpublicschools.org/docs/gradrequirements/resources/math/requirements.pdf)

The logo for 'ncwise' is displayed in a sans-serif font. The letters 'nc' are red, and 'wise' is blue. The logo is set against a background of a light gray grid pattern. Above the grid is a thin red horizontal line, and below it is a thick yellow-green horizontal bar.

ncwise

[http://www.ncpublicschools.org/
gradrequirements/resources/](http://www.ncpublicschools.org/gradrequirements/resources/)

9 Plans

1. **FRC1(7) UNC Admission Req. No Career Cluster**
2. **FRC2(7) UNC Adm. Req. With Career Cluster**
3. **FRC3(7) Other UNC Schools (IHE), Private (IHE) and Community Colleges. No Career Cluster**

Plan cont.

- 4. FRC4(7) Other IHE Schools (not UNC), Private and Community Colleges. With Career Cluster**

- 5. FRC5(7) Math Substitution. No Career Cluster**

- 6. FRC6(7) Math substitution. With Career Cluster**

Plan cont.

- 7. FRC7(7) Student affected by NCGS 115 C. No Career Cluster**

- 8. FRC8(7) Student affected by NCGS 115 C. With Career Cluster**

- 9. FRC9(7) Occupational Course of Study**

Additional information:

**How to update diploma selections
for 9th graders when FRC is in
production.**

**9th grade students
Diploma type
And 9th Grade Entry Date
are correct.**

Importance of eSIS 9th Grade Entry Date field:

- Critical for UNC calculations and the transcript.
- For Graduation Rate calculations.
Data must be accurate and complete.

WHEN?

- **Legislature - Arts Requirements**
- **DPI Requirements documentation**
- **eSIS Setup time**

Questions?

summer_2009@dpi.state.nc.us

COURSE UTILITY

Course Utility



NCWISE Course Utility Database Welcome

Home

MAIN MENU -- COURSE UTILITY

Please Click On An Item In The List Below:

- [Course Selection Using Multiple Selection Criteria](#)
- [Search By Course Code](#)
- [Search By Course Description](#)
- [Search By 5th Position Of The External Course Code](#)
- [Search By Academic Level](#)
- [Search By Grade Level](#)
- [Search By Course End Date](#)
- [Show Inactive Courses \(End Date Is Populated\)](#)
- [Show Active Courses \(No End Date\)](#)
- [EXIT Course Code Utility Database](#)

NOTE: To change the sort order on any report, click the underlined column heading.

If there are problems or questions please contact the Help Desk: (919) 807-4357 or email: help@dpi.state.nc.us

SEARCH

BY:

NAME

ACADEMIC LEVEL

END DATE

SUBJECT

AND MORE!

[Return To Main Menu](#) Course Selection Using Multiple Criteria - (Use the CTRL key to make multiple selections within boxes or undo selections.)

Status: Active Inactive Both School Year: Current Next All For parameter definition Help click on blue labels.

[NC Virtual Public School](#)

NCVPS Standard
NCVPS Honors
NCVPS Advanced Placement
MS- High School Credit Part 1
MS- High School Credit Part 2
MS- High School Credit

[Community College](#)

Community College Or University- Honor Part 1
Community College Or University- Honor Part 2
Community College Or University Standard
Community College- Honors
Community College- Honors and Online ONLY

[University](#)

University 300 Level or Higher Standard
University- Honors
University- Honors and Online ONLY
University 300 or higher Standard Online ONLY

[Pre-Kindergarten](#)

Pre-K Special Education
Pre-K Abridged/Adapted/Remedial
Pre-K Standard

[Elementary School](#)

ES- Special Education
ES- Non-Classroom Activity
ES- Abridged/Adapted/Remedial
ES- Standard

[Middle School](#)

MS- High School Credit Part 1
MS- High School Credit Part 2
MS- High School Credit
MS- Special Education
MS- Abridged/Adapted/Remedial
MS- Standard
MS- Applied/Technical
MS- Non-Classroom Activity
MS- Honors/Advanced (conversion only do not use)

[High School](#)

HS- Special Education
HS- Abridged/Adapted/Remedial
HS- Standard
HS- Applied/Technical
HS- Honors/Advanced
HS- Coop Education
HS- Advanced Placement
HS- International Baccalaureate
HS- Non-Classroom Activity
Online- Other

[Subject Area \(add subject filter\)](#)

Self Contained/Blocked Courses
Communication Skills and Foreign Languages- Reading- English- Language Arts
Mathematics/Computer Science
Science
Social Studies
Arts Education
Career Development and Business- Marketing- Agriculture Education
(CTE) Family and Consumer Science- Health and Trade Education
Technology Education
Health and Physical Education- Occupational
Miscellaneous
Non-Classroom Activities

[Academic Level \(add Academic filter\)](#)

Special Education - 0
Abridged/Adapted - 1
Basic/Introduction - 2/Q/T/U/V
Applied/Technical - 3
NCVPS Advanced Placement - 4
Honors/Advanced - 5/I/J/K/L/O/W
Cooperative Education - 6
Advanced Placement - 7/D/E
International Baccalaureate - 8
Non-Classroom - 9

[Courses in Special Categories \(click here for info\)](#)

- UNCGi
- NCSSM
- Gateway School
- Community College Crosswalk Courses
- Comprehensive Articulation Agreement
- Learn And Earn Online (LEO)
- N/A

Click a "Course Code" to display course details, including diploma information, if present.

Course Code ▲	Course Desc	Short Name	Grade Level	External Course Code	Credit Value	Academic Level Code	Start Date	End Date	Special Cat Course Type	Special Cat Course Code	Comments
1014I	COM 111 Voice and Diction I	COM 111 Voice and Diction I	09	1014X	1	I	01-JUL-07		CCCC	COM 111	
1014T	COM 111 Voice and Diction I	COM 111 Voice and Diction I	09	1014X	1	T	01-JUL-07		CCCC	COM 111	

Search By Course Code NOTE: To change the sort order on any report, click the underlined column heading.

[Return to Main Menu](#)

Please enter Course Code in the search box and press GO. You may search by entering a partial course code or full course code. The Reset Button will clear selection parameter and select all.

Search

Click on a Course_Code to drill down to see the Diploma Information, if present, for that course.

<u>COURSE CODE</u> ▲	<u>COURSE DESC</u>	<u>SHORT NAME</u>	<u>GRADE LEVEL</u>	<u>CREDIT VALUE</u>	<u>EXTERNAL COURSE CODE</u>	<u>ACADEMIC LEVEL CODE</u>	<u>START DATE</u>	<u>END DATE</u>
00000	Self-Contained	Self Cont	KI	1	0000X	0	01-JUL-85	

Output_Course_Code_Selection | MS_Word row(s) 1 - 1 of 1

[Return To Main Menu](#)

Course Report By End Date --- Select all courses with an End Date on or before the search parameter date.

NOTE: To change the sort order on any report, click the underlined column heading.

[Return to Main Menu](#)

Please select End Date via Calendar icon and press GO (current date is highlighted). The Reset Button will clear selection parameter.

Search End Date Less Than Or Equal To MM/DD/YYYY



Go

Reset

Report

No data found.

[Return To Main Menu](#)

Course Inactive Report (End Date is populated) NOTE: To change the sort order on any report, click the underlined column heading.

[Return to Main Menu](#)

Shows all courses where an End Date is populated (click on a column heading to change sort).

Report

<u>COURSE CODE</u>	<u>COURSE_DESC</u>	<u>SHORT_NAME</u>	<u>GRADE_LEVEL</u>	<u>CREDIT_VALUE</u>	<u>EXTERNAL COURSE CODE</u> ▲	<u>ACADEMIC LEVEL CODE</u>	<u>START_DATE</u>	<u>END_DATE</u>
01095	Lang Arts/Pe (Health)	LA/PE	09	1	0109X	5	01-JUL-85	01-AUG-08
0109H	Lang Arts/Pe (Health)	LA/PE	06	1	0109Y	5	01-JUL-85	01-AUG-08
01295	L Art/Math/Pe (Health)	LA.Ma/Sci	09	1	0129X	5	01-JUL-85	01-AUG-08
0129H	L Art/Math/Pe (Health)	LA/Ma/PE	06	1	0129Y	5	01-JUL-85	01-AUG-08
02306	Math/Sci/Pe (Health)	Ma/Sci/PE	00	1	0230X	6	01-JUL-85	01-AUG-08
0239H	Math/Sci/Pe (Health)	Ma/Sci/PE	06	1	0239Y	5	01-JUL-85	01-AUG-08
02905	Math/Pe (Health)	Math/PE	09	1	0290X	5	01-JUL-85	01-AUG-08
0290H	Math/Pe (Health)	Math/PE	06	1	0290Y	5	01-JUL-85	01-AUG-08
03905	Science/Pe (Health)	Sci/PE	09	1	0390X	5	01-JUL-85	01-AUG-08
0390H	Science/Pe (Health)	Sci/PE	06	1	0390Y	5	01-JUL-85	01-AUG-08
04395	Soc St/Sci/Health (Pe)	SS/Sci/Hea	09	1	0439X	5	01-JUL-85	01-AUG-08
0439H	Soc St/Sci/Health (Pe)	SS/Sci/Hea	06	1	0439Y	5	01-JUL-85	01-AUG-08
04905	Soc St/Pe (Health)	SS/PE	09	1	0490X	5	01-JUL-85	01-AUG-08
0490H	Soc St/Pe (Health)	SS/PE	06	1	0490Y	5	01-JUL-85	01-AUG-08
0990H	Health/Phys Ed (K-8)	HlthPE K-8	06	1	0990Y	5	01-JUL-85	01-AUG-08
10010	Reading Honors	Reading	09	1	1001X	0	03-MAR-08	04-MAR-08
1001Q	Reading	Reading	09	1	1001X	Q	03-MAR-08	04-MAR-08
10200	English	English	09	1	1020X	0	01-JUL-85	01-JUL-93
10201	English	English	09	1	1020X	1	01-JUL-85	01-JUL-93
10202	English	English	09	1	1020X	2	01-JUL-85	01-JUL-93
10205	English	English	09	1	1020X	5	01-JUL-85	01-JUL-93
10237	English III	English 3	09	1	1023X	7	01-JUL-85	01-JUL-06
10247	English IV	English 4	09	1	1024X	7	01-JUL-85	01-JUL-06
10300	Bible As Literature	Bible Lit	09	1	1030X	0	01-JUL-85	01-JUL-94
10301	Bible As Literature	Bible Lit	09	1	1030X	1	01-JUL-85	01-JUL-94
10302	Bible As Literature	Bible Lit	09	1	1030X	2	01-JUL-85	01-JUL-94
10305	Bible As Literature	Bible Lit	09	1	1030X	5	01-JUL-85	01-JUL-94
1038N	English As A Secd Lang	Eng 2nd	PK	0	1038P	1	01-JUL-85	01-JAN-09
10381	English As A Secd Lang	Eng 2nd	09	1	1038X	1	01-JUL-85	01-JAN-09
10385	English As A Secd Lang Honors	Eng 2nd	09	1	1038X	5	01-JUL-85	01-JAN-09
1038B	English As A Secd Lang	Eng 2nd	06	0	1038Y	1	01-JUL-85	01-JUL-09
.....

Search By Course Description NOTE: To change the sort order on any report, click the underlined column heading.

[Return to Main Menu](#)

Please enter Course Description in the search box and press GO. Partial descriptions can be searched as well. The Reset Button will clear the selection parameter and select all.

Search

Report

<u>COURSE CODE</u> ▲	<u>COURSE_DESC</u>	<u>SHORT_NAME</u>	<u>GRADE_LEVEL</u>	<u>CREDIT_VALUE</u>	<u>EXTERNAL COURSE CODE</u>	<u>ACADEMIC LEVEL CODE</u>	<u>START DATE</u>	<u>END DATE</u>
00000	Self-Contained	Self Cont	KI	1	0000X	0	01-JUL-85	
00001	Self-Contained	Self Cont	09	1	0000X	1	01-JUL-85	
00002	Self-Contained	Self Cont	09	1	0000X	2	01-JUL-85	
00005	Self-Contained	Self Cont	09	1	0000X	5	01-JUL-85	
0000A	Self-Contained	Self Cont	06	0	0000Y	0	01-JUL-85	
0000B	Self-Contained	Self Cont	06	0	0000Y	1	01-JUL-85	
0000C	Self-Contained	Self Cont	06	0	0000Y	2	01-JUL-85	
0000E	Self-Contained	Self Cont	KI	0	0000Z	0	01-JUL-85	
0000H	Self-Contained	Self Cont	06	0	0000Y	5	01-JUL-85	
0000M	Self-Contained	Self Cont	PK	0	0000P	0	01-JUL-85	
0000N	Self-Contained	Self Cont	PK	0	0000P	1	01-JUL-85	
0000P	Self-Contained	Self Cont	PK	0	0000P	2	01-JUL-85	
0000R	Self-Contained	Self Cont	KI	0	0000Z	1	01-JUL-85	
0000S	Self-Contained	Self Cont	KI	0	0000Z	2	01-JUL-85	

Output_Course_Description_Selection | MS_Word

row(s) 1 - 14 of 14

[Return To Main Menu](#)

Questions?

summer_2009@dpi.state.nc.us

More Information

Training & Support Contacts

- NC WISE Training Team:
ncwisetraining@dpi.state.nc.us
- NC WISE Service Desk:
help@dpi.state.nc.us
- Service Desk phone number:
919.807.4357

ncwise

ncwise

www.ncwise.org