



March 24, 2017

# Digital Teaching and Learning

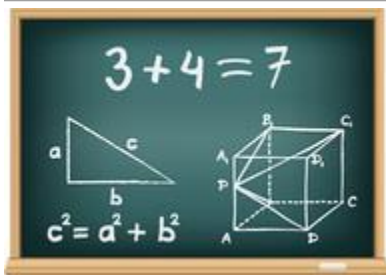
ACADEMIC AND DIGITAL LEARNING



## NC SIS Weekly Email Bulletin

### In this issue:

1. Math Option Chart - Updated
2. Emergency Maintenance for Schoolnet
3. OCR/CRDC - NCDPI State Level Submission Complete
4. NCDPI's Technology Support Center's Knowledge Base
5. PowerScheduler Regional Working Sessions (Build & Load, Load Only)
6. NC SIS Training Calendar



## Math Option Chart - Updated

Please find an updated [Mathematics Graduation Requirements Chart](#) on the NC SIS website's Courses page. Changes were made to the heading of the Substitution column and to the link and label for the SBE policy regarding graduation requirements.



## Emergency Maintenance for Schoolnet

Due to today's performance issues experienced in Schoolnet, Pearson plans to perform an emergency maintenance **Sunday, March 26, 2017, at 10:00 a.m.** The duration of this maintenance should not exceed one hour.

Maintenance will involve applying a code hot fix to resolve two conflicting queries in the Schoolnet database when online testing peaks; thus, resulting in slow performance and connectivity issues.

If you have questions concerning this maintenance please contact the Home Base Support Center at (919) 807-4357, or by submitting a ticket through the [Remedy Portal](#).



## OCR/CRDC - NCDPI State Level Submission Complete

All LEAs and Charters may now complete the OCR/CRDC Submission in the Federal Portal.

The NC DPI has completed correcting errors that were generated in the Federal Submission Portal upon upload. After review and update, LEAs and Charters may now certify their data in the Federal Submission Portal.

Please be aware that errors may still exist in some LEAs. The submission may not be certified until all errors are corrected. To see LEA and School Errors and Warnings, click the Reports Link at the top right of the Federal Submission Portal home page. Navigate to the Error Resolution Report for Advanced Users report and click Download Error Resolution Report.

All collections must be certified by April 24, 2017.

### Resources from the OCR:

Looking for some guidance on how to use the Submission Tool? Please click this

link: <https://crdc.grads360.org/#communities/pdc/documents/7728>

The guide is for the 2013-14 collection and an updated reference is pending, but it should get you used to navigating the system.

Please contact Terra Dominguez, [terra.dominguez@dpi.nc.gov](mailto:terra.dominguez@dpi.nc.gov), with any questions regarding the OCR/CRDC process.



## NCDPI's Technology Support Center's Knowledge Base

LEA/Charter School coordinators, data managers and staff that use or support the Home Base suite of tools can access the Technology Support Center's Knowledge Base. Inside is an extensive library of resources available to users 24/7.

Our knowledge base includes:

- Knowledge Base Articles, 'How To' Guides
- FAQ's, Quick Reference Documents
- Tips, Hints and More!
- Links to other support resources - e.g. NC-SIS webpage and PowerSource

Users can request access at: <http://servicedesk.ncdpi.wikispaces.net/home>

Knowledge Base Quick Reference Doc at: <http://bit.ly/HomeBaseKB>

**Check back often - New resources added regularly!**

---

## PowerSchool

### PowerScheduler Regional Working Sessions (Build & Load, Load Only)

\*\*Please note, all registration information is subject to North Carolina Public Records Law.

Attendees must be an employee of a North Carolina public school. Management companies and their employees are not permitted to attend.

The "Build and Load" session is designed for schools building a master schedule using PowerScheduler. Prior to attending this session, schools MUST complete at minimum, steps A-H in the "[PowerScheduler: Prepare to Build](#)" workbook. Having the build data validated and errors cleared before attending is recommended. Schools will work with their scheduling teams to complete the build and load processes to the extent that time allows.

The "Load Only" session is designed for schools planning to copy their master schedule, and loading students into courses. Prior to attending this session, schools MUST complete at minimum, steps A-G in the "[PowerScheduler: Load Process](#)". Schools will work with their scheduling teams to complete the load processes to the extent that time allows.

These workshops are not intended to be a training session. They are hands-on work sessions; schools should plan to send all personnel needed to complete the build and load processes and/or load processes. Up to 4 people per school may attend.

Only the LEA/Charter SIS Coordinator or designee may register their schools for sessions. Note, only 1 school per LEA may sign up per regional "Build and Load" and "Load Only" sessions. For example, an LEA may send up to three schools per week (one school Monday-Tuesday Build and Load, one school Wednesday for Load Only, and

one school Thursday-Friday Build and Load). It is only necessary to create one registration for each school - not one for each person that may attend. Each registration allows 4 people from that school to attend.

Attendees are to bring a laptop to each session and make sure that the latest PowerScheduler Engine is Loaded before coming to the session.

\*\*Please note, NCDPI has the right to combine sessions if not enough attendees register.

Sessions run 9 a.m. - 4 p.m. each day with lunch on your own.

Sessions will be held at:

| <b>Location</b>  | <b>Build &amp; Load</b> | <b>Load</b>    | <b>Build &amp; Load</b> |
|--|-------------------------|----------------|-------------------------|
| <b>Randolph County Schools</b><br>System Media Lab<br>2222-C South Fayetteville St. Asheboro, NC 27205     | April 24 - 25, 2017     | April 26, 2017 | April 27 - 28, 2017     |
| <b>Union County Schools</b><br>Technology Department<br>721 Brewer Dr, Monroe, NC 28112                    | April 24 - 25, 2017     | April 26, 2017 | April 27 - 28, 2017     |
| <b>NC Dept. of Public Instruction</b><br>301 N. Wilmington St.<br>Raleigh, NC 27601<br>Room 504            | May 1 - 2, 2017         | May 3, 2017    | May 4 - 5, 2017         |
| <b>Beaufort County Schools</b><br>Ed Tech Center<br>820 North Bridge Street, Washington, NC 27889          | May 1 - 2, 2017         | May 3, 2017    | May 4 - 5, 2017         |
| <b>New Hanover County Schools</b><br>Board of Education Center<br>1805 S. 13th Street Wilmington, NC 28401 | May 8 - 9, 2017         | May 10, 2017   | May 11 - 12, 2017       |
| <b>Buncombe County Schools</b><br>Central Office<br>175 Bingham Road, Asheville, NC 28806                  | May 8 - 9, 2017         | May 10, 2017   | May 11 - 12, 2017       |
| <b>Lenoir County Schools</b><br>Teachers Memorial<br>500 Marcella Drive<br>Kinston, NC 28501               | May 15 - 16, 2017       | May 17, 2017   | May 18 - 19, 2017       |
| <b>Watauga County Schools</b><br>Watauga High School<br>300 Pioneer Drive Boone, NC 28607<br>Room 2202     | May 15 - 16, 2017       | May 17, 2017   | May 18 - 19, 2017       |

To register, please click [HERE](#). Registration closes April 3, 2017.

If you have any additional questions, please email Tiffany Kinney at [tiffany.kinney@dpi.nc.gov](mailto:tiffany.kinney@dpi.nc.gov), Cami Narron at [cami.narron@dpi.nc.gov](mailto:cami.narron@dpi.nc.gov), and/or Jackie Utter at [jacqueline.utter@dpi.nc.gov](mailto:jacqueline.utter@dpi.nc.gov).

Thank you,  
Home Base Professional Learning Team

---

## 2017 NC SIS Training Calendar

The [2017 Training Calendar for PowerSchool](#) related training is available on the [NC SIS website](#). To access the calendar, users may click on "Training" located on the blue menu bar and select "Calendar". If you are unable to view the calendar on your first attempt, either refresh the page, clear cache and cookies from the browser and then re-open it, or open the calendar in a different browser.



Training sessions and dates are listed below. Please visit this calendar often for additional training sessions and updates.

### PowerSchool New Charter Setup Q & A Webinar

This webinar will address new charter school setup for the 2017-2018 school year. It will cover what information needs to be collected and completed before attending training at DPI. Time will be given for questions.

#### Dates/Times

April 19, 2017

2:00 PM - 3 PM

Registration URL:

<https://attendee.gotowebinar.com/register/1810443032407775235>

### PowerSchool New Charter Training

ATTENDEES MUST BE AN EMPLOYEE OF THE SCHOOL AND NOT A MANAGEMENT COMPANY.

This is a three and a half day workshop to walk new charter school users through the process of setting up their school for the new year. This session will include, but is not limited to:

- Logging into PowerSchool
- Navigating the system
- Enrolling students
- Withdrawing students
- Adding teachers/staff
- Creating the master schedule
- Scheduling students and teachers to classes

#### Dates/Times

May 23 - May 26, 2017

9:00 AM - 4:00 PM (Tues. - Thurs)

9:00 AM - 12:00 PM (Fri.)

Registration URL:

<http://bit.ly/PSNewCharter17-18>

---

Remember to visit the [NC SIS website](#) for additional information including webinars and training documentation.

NC SIS

NC Department of Public Instruction

Education Building, 7th Floor North  
301 North Wilmington Street  
Raleigh, NC 27601

919-807-3190 Office  
919-807-3421 Fax  
Email: [ncsis@dpi.nc.gov](mailto:ncsis@dpi.nc.gov)